

# JumpRecorder™

## The Parachute Data Logger

Install the JumpRecorder ruggedized wearable in your parachute harness for up to a month without charging, and automatically record data for each jump including location, speed, altitude, and orientation. Extract data via USB or wirelessly over Bluetooth to assess incidents, improve training, manage equipment, and increase safety.

## FEATURES

Ruggedized

Long Battery Life

Automatic Jump Detection

GPS and Pressure Sensors

USB and Bluetooth Compatible

4GB of Internal Storage



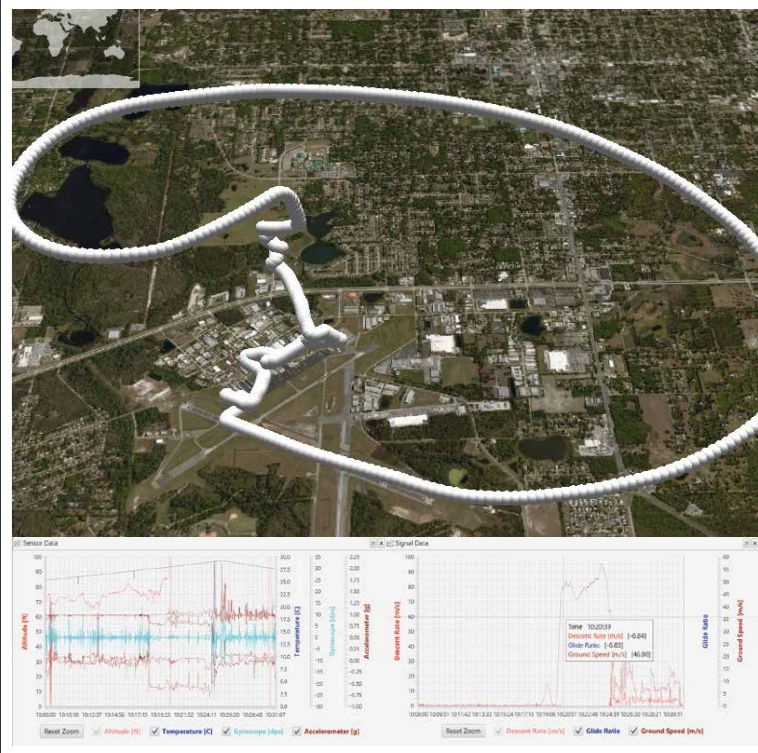
## CAPABILITIES

- Parachute jump training
- Test and Evaluation (T&E) of new parachute concepts
- Black box data for After Action Reports (AAR)
- Complementary to parachute load cell systems
- USB data transfer/charging
- Compatible with personal and cargo parachutes
- Automated wake-up
- Data analytics and visualizations
- Time-based event tracking



For more information, contact  
Shawn Conley  
+1 386 736-3862

# JUMPVIEW™ USER INTERFACE



The JumpView user interface provides a convenient and powerful tool for skydiving data management and analysis. The JumpView interface features include:

- Consistent data for after action reports
- Intuitive interface for enterprise-wide data management
- Advanced analytics
- Time-based event tracking
- Storage, charting, and data visualization
- 3-D altitude measurement
- Advanced algorithms and modeling

## SPECIFICATIONS

### Accelerometer

+/- 16g, 3 axis, 1kHz

### Compass

0.5° resolution, 100Hz

### Physical Dimensions

3.9 x 2.4 x 0.75 in  
(98 x 62 x 19 mm)

### Altimeter

260-1260 mbar @ 0.0002 mbar resolution

### Power Consumption

50mW (standby)  
140mW (max)

### Data Storage

70 hrs (max data rate)  
200+ hrs (reduced data rate)

### GPS

<3 m CEP Position accuracy, 10Hz

### Operating Temperature

20-60 °C (discharge)  
0-40 °C (charge)

### Battery Runtime

20 hrs (max data rate)  
64 hrs (reduced data rate)

### Gyroscope

+/- 2000°/sec, 3 axis, 1kHz

### Weight

100g